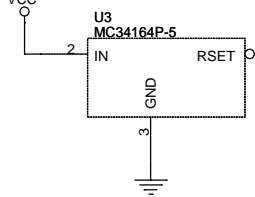
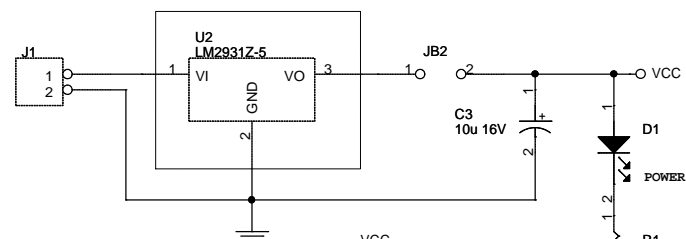
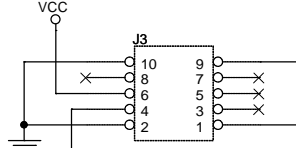
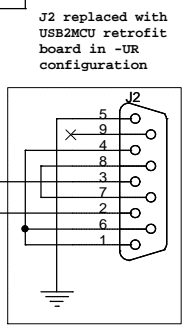
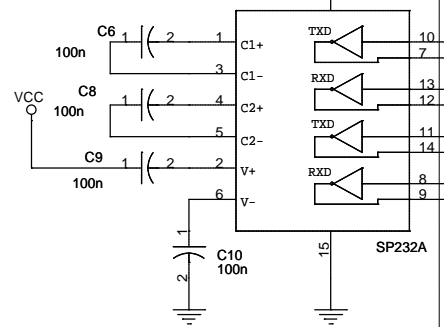


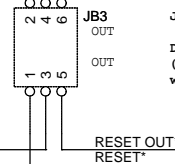
In -UR version, U2 is removed and pin 1 is jumpered to pin 3
Omit JB2 if all BDM circuitry is to be powered by target.



In -UR version, U4 is replaced with isolated R-pak,
to route TTL-level RX and TX signals to MCU.
Associated capacitors C6, C8, C9, & C10 are omitted.

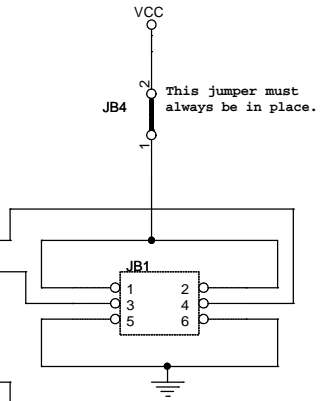
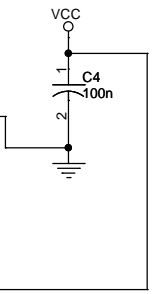
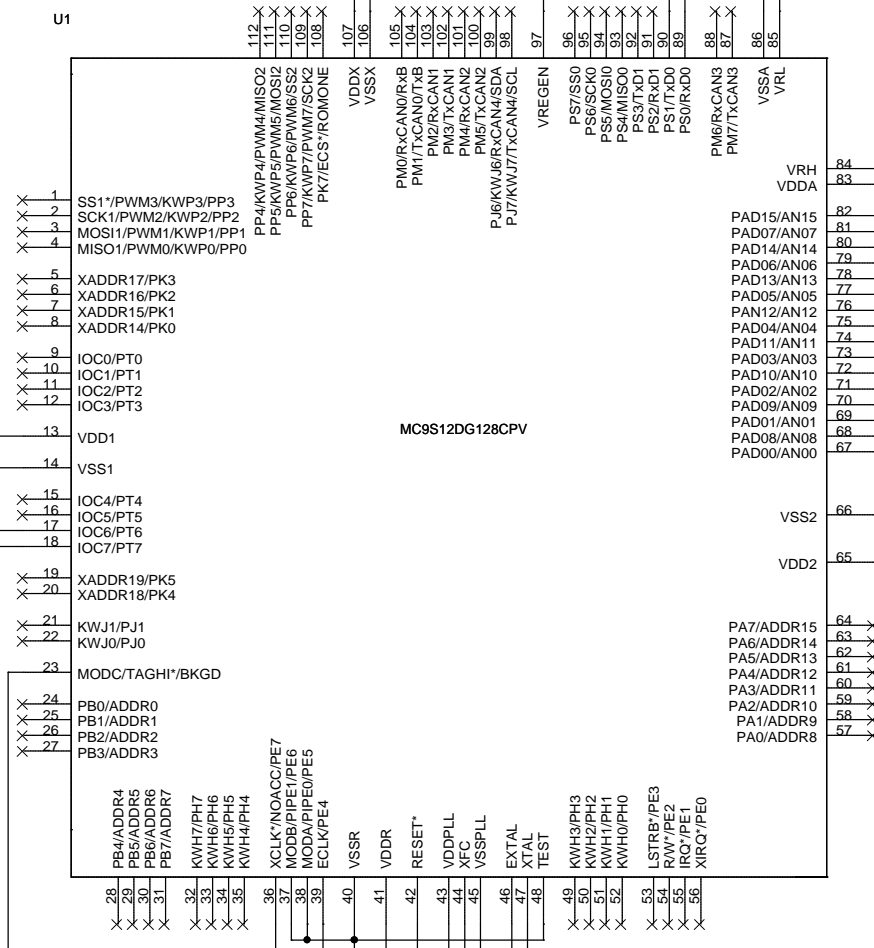
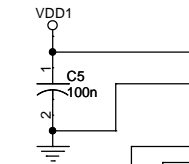
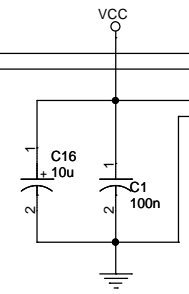


BDM cable attaches to J3.
A 10-pin cable is used;
However, only pins 1
through 6 are needed.



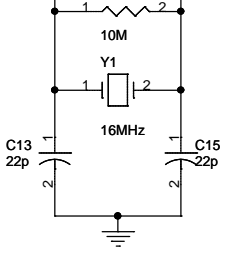
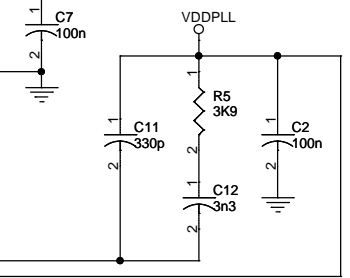
JB3: BDM IN/OUT SELECT
DEFAULT: OUT (4-6 and 3-5)
(Place in IN position only
when updating firmware)

RESET OUT*
RESET*



JB1: D-Bug12 Mode Select

Leave in Pod Mode
(i.e. PAD00=PAD01=1)
except to restore factory defaults
(i.e. EVB Mode: PAD00=PAD01=0)



- NOTES:**
- 1) This product does not work with 3V targets.
 - 2) The only difference between LX and XG versions is the firmware that is installed in U1.

support@technologicalarts.ca sales@technologicalarts.ca www.technologicalarts.com		
TECHNOLOGICAL ARTS, INC.		
Title MicroBDM12LX(XG)5 Background Debug Mode Pod for 5-Volt Targets		
Size B	Document Number FILE: UBDM12LX5.DSN	Rev 2a
Date: Wednesday, March 31, 2010	Sheet 1	of 1